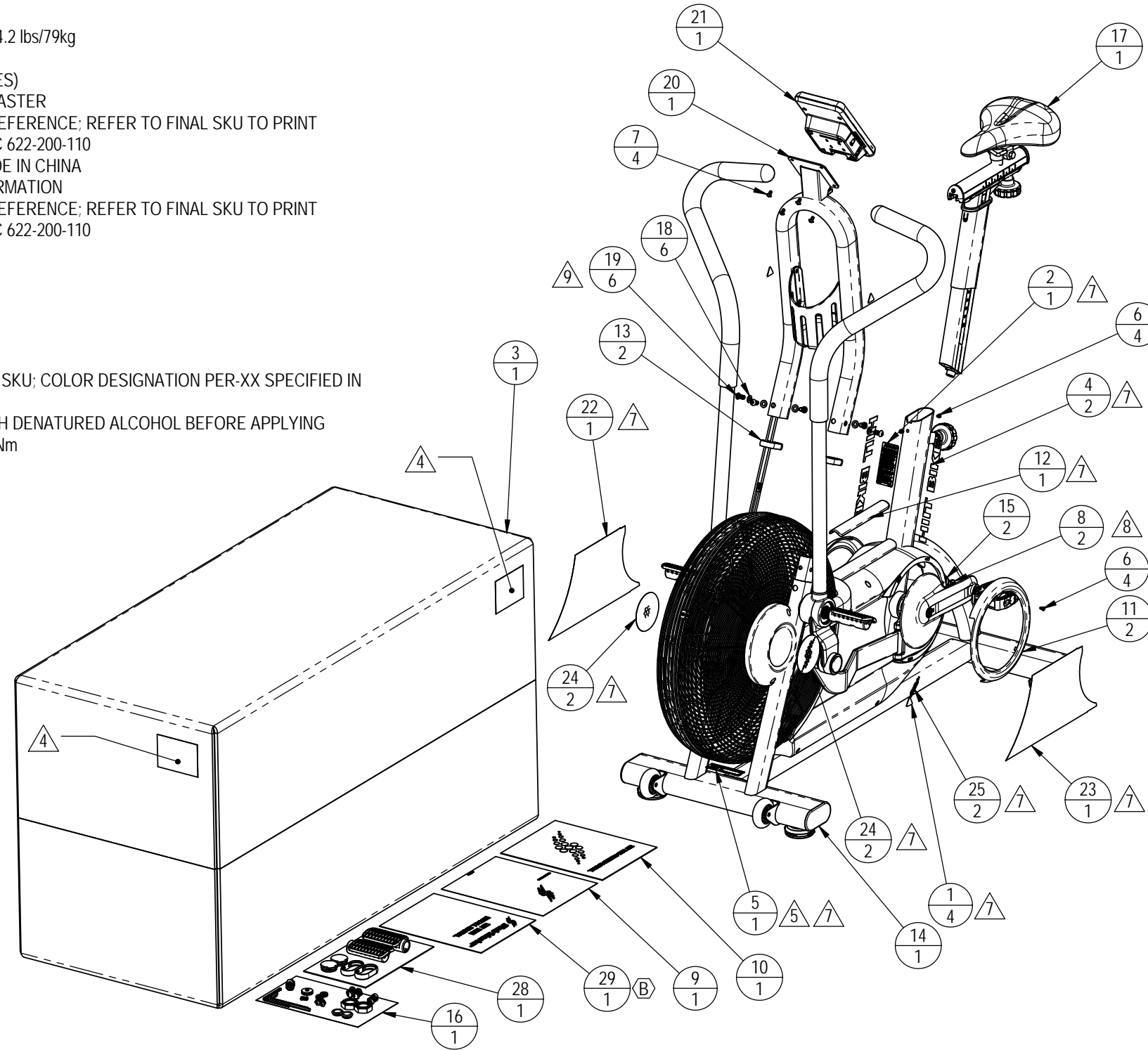


NOTES:

- BOX SIZE
  - L=1265mm
  - H=550mm
  - W=690mm
- BOX UNIT GROSS WEIGHT: 174.2 lbs/79kg
- NET WEIGHT: 123.5 lbs/56kg
- LABEL INFORMATION (4 PLACES)
  - MODEL: HIIT BIKE, STAIRMASTER
  - SKU: 9-4650-XXXXXP0 IS REFERENCE; REFER TO FINAL SKU TO PRINT
  - SERIAL NUMBER: PER DOC 622-200-110
  - COUNTRY OF ORIGIN: MADE IN CHINA
- PRIMARY SERIAL LABEL INFORMATION
  - SKU: 9-4650-XXXXXP0 IS REFERENCE; REFER TO FINAL SKU TO PRINT
  - SERIAL NUMBER: PER DOC 622-200-110
  - MFG DATE: MM/YYYY
  - PHASE: N/A
  - CYCLES: N/A
  - WATTS: N/A
  - VOLTS/AMPS: N/A
  - TYPE: N/A
- COLOR IS SPECIFIED IN FINAL SKU; COLOR DESIGNATION PER-XX SPECIFIED IN SOP 620-200-112
- CLEAN MATING SURFACE WITH DENATURED ALCOHOL BEFORE APPLYING
- TORQUE TO 33-37 lb-ft / 45-50 Nm
- TORQUE TO 10 lb-ft / 13.5 Nm

REVISION HISTORY				
REV	DATE	DESCRIPTION	ECO	BY
A	8/31/2017	PRODUCTION RELEASE	15771	AW
B	10/5/2017	ADD 620-8582	15819	AW



ITEM NO.	PART NUMBER	DESCRIPTION	QTY.	NOTES
1	050-2142	LABEL, WARNING, PINCH POINT, ICON	4	
2	050-2215	LABEL, GENERAL WARNING, E-BTS	1	
3	050-2325	Box, Packaging, Tempest, StairMaster	1	
4	050-5518	LOGO, HIITBIKE, DOWN TUBE	2	
5	050-5487	(Label, S/N, Non-Powered, Primary, Core H&F	1	
6	110-3581	SCREW, M4.2, 8mm, PHT, PH, SS	4	
7	410-3690	Screw, M5x0.8, 10mm, THM, PH, SS	4	REF
8	110-3717	Screw, M8x1.25, 12mm, FCM, HE, AS, E-CB, Gr-12.9	2	
9	620-8223	DOC, WARRANTY, COMMERCIAL, STAIRMASTER	1	
10	620-8245	Manual, Owners, HIIT BIKE	1	
11	718-5487-XX	SHROUD, CRANK RING, TURBO	2	
12	718-5519-XX	STEP, COVER, TUBE, TURBO TRAINER	1	
13	718-5520-XX	RING, BEAUTY, RAIL SPACER	2	
14	718-5789-XX	BASE, ASSY, FAN, HIIT BIKE	1	
15	718-5646	Cap, End, Crank	2	
16	718-5800	Kit, Hardware, HIIT BIKE	1	
17	718-5734	ASSY, SEAT POST, W/ SLIDER, AIRFIT G2.5	1	
18	731-0355	WASHER, PLAIN, M8, NARROW	6	
19	731-5162	Screw, M8x1.25, 16mm, BHC, HK, CS, NP	6	
20	718-5774-XX	ASSY, DISPLAY BASE, HIIT BIKE	1	
21	718-5722	HIIT DISPLAY ASSY.	1	
22	050-5515	LABEL, SHROUD, RIGHT, HIIT BIKE	1	
23	050-5516	LABEL, SHROUD, LEFT, HIIT BIKE	1	
24	050-5517	LABEL, COVER, AXLE, FAN, HIIT BIKE	2	
25	050-5528	LABEL, HIIT BIKE STAIRMASTER	2	
26	718-5820	ASSY, PEDAL, HIIT BIKE, L	1	
27	718-5821	ASSY, PEDAL, HIIT BIKE, R	1	
28	718-5799-XX	Kit, Acc., HIIT BIKE	1	
29	620-8582	MANUAL, INSTALL, HIIT BIKE	1	

DOCUMENT STATUS:

NOTICE OF PROPRIETARY INFORMATION  
 THIS DOCUMENT SHALL NOT BE REPRODUCED NOR SHALL THE INFORMATION CONTAINED HEREIN BE USED BY OR DISCLOSED TO OTHER EXCEPT AS EXPRESSLY AUTHORIZED BY CORE HEALTH & FITNESS, LLC.

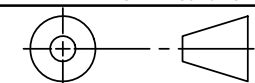
CLASS OF WORK	UNLESS OTHERWISE SPECIFIED DIMS ARE IN mm. TOLERANCES FOR MEASURE OF LENGTH ARE:							ANGLES = ±2°
	0.5 to 3	> 3 to 6	> 6 to 30	> 30 to 120	> 120 to 400	> 400 to 1000	> 1000 to 2000	
FINE	±0.05	±0.05	±0.1	±0.15	±0.2	±0.3	±0.5	----
MEDIUM	±0.1	±0.1	±0.2	±0.3	±0.5	±0.8	±1.2	±2
COARSE	±0.2	±0.3	±0.5	±0.8	±1.2	±2	±3	±4
VERY COARSE	----	±0.5	±1	±1.5	±2.5	±4	±6	±8

MATERIAL  
SEE BOM

FINISH  
SEE FINAL SKU FOR COLOR

VENDOR: P/N:

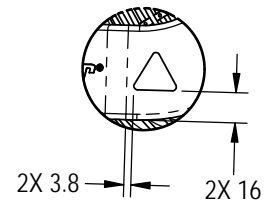
THIRD ANGLE PROJECTION



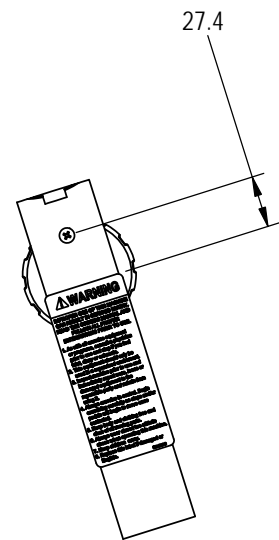
CORE HEALTH & FITNESS, LLC

4400 NE 77th Ave., Suite 300  
 Vancouver, WA 98662

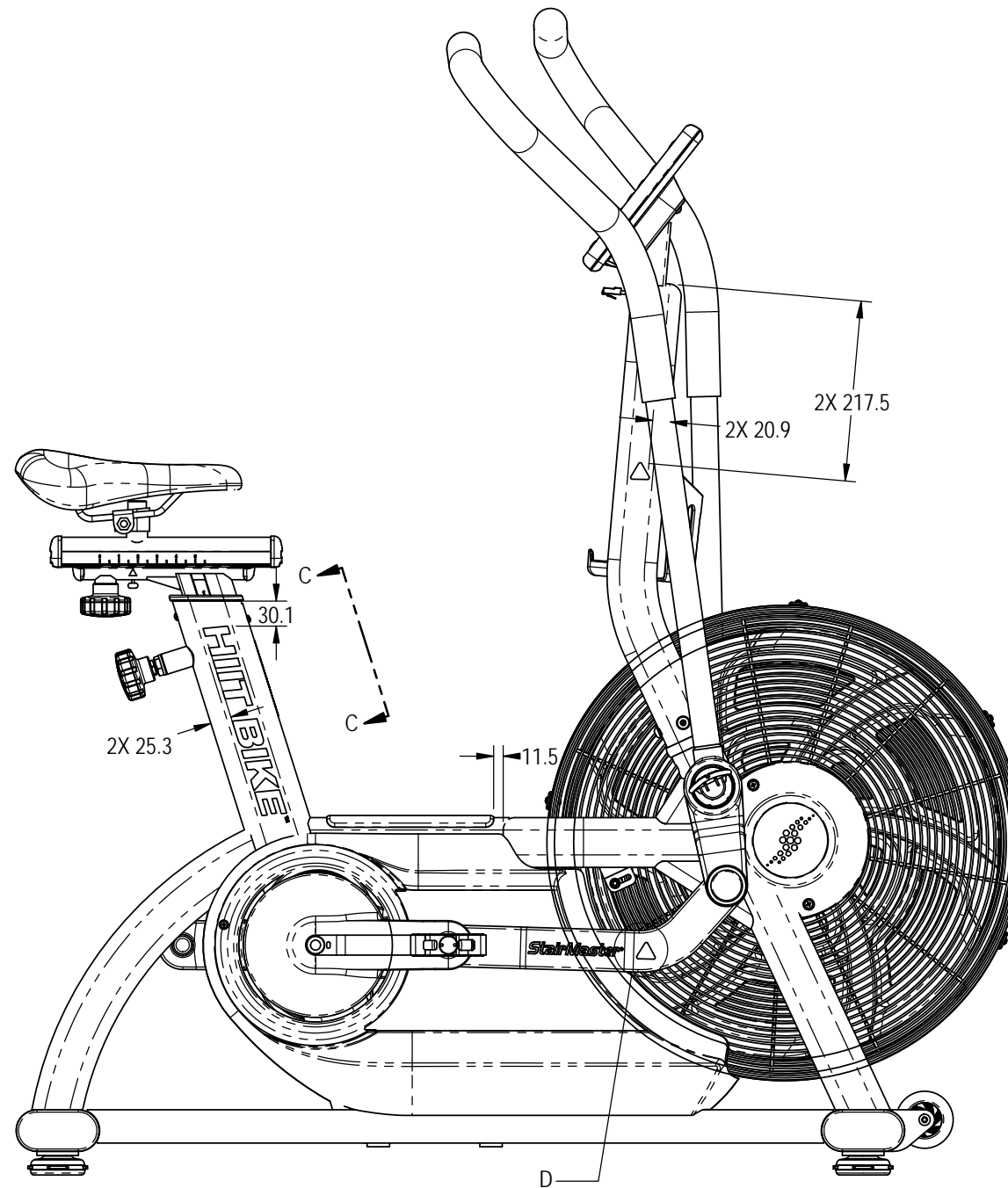
DRAWN	INITIAL AW	DATE 8/31/2017	CORE PART NO <b>9-4650-XXXXXP0</b>	REV <b>B</b>
CHECKED			TITLE HIIT BIKE, STAIRMASTER	
APPROVED			SCALE: 1:12	SHEET 1 OF 2
	U.O.M.	MM	SHEET SIZE: B	



DETAIL D  
SCALE 1:4



SECTION C-C  
SCALE 1:4

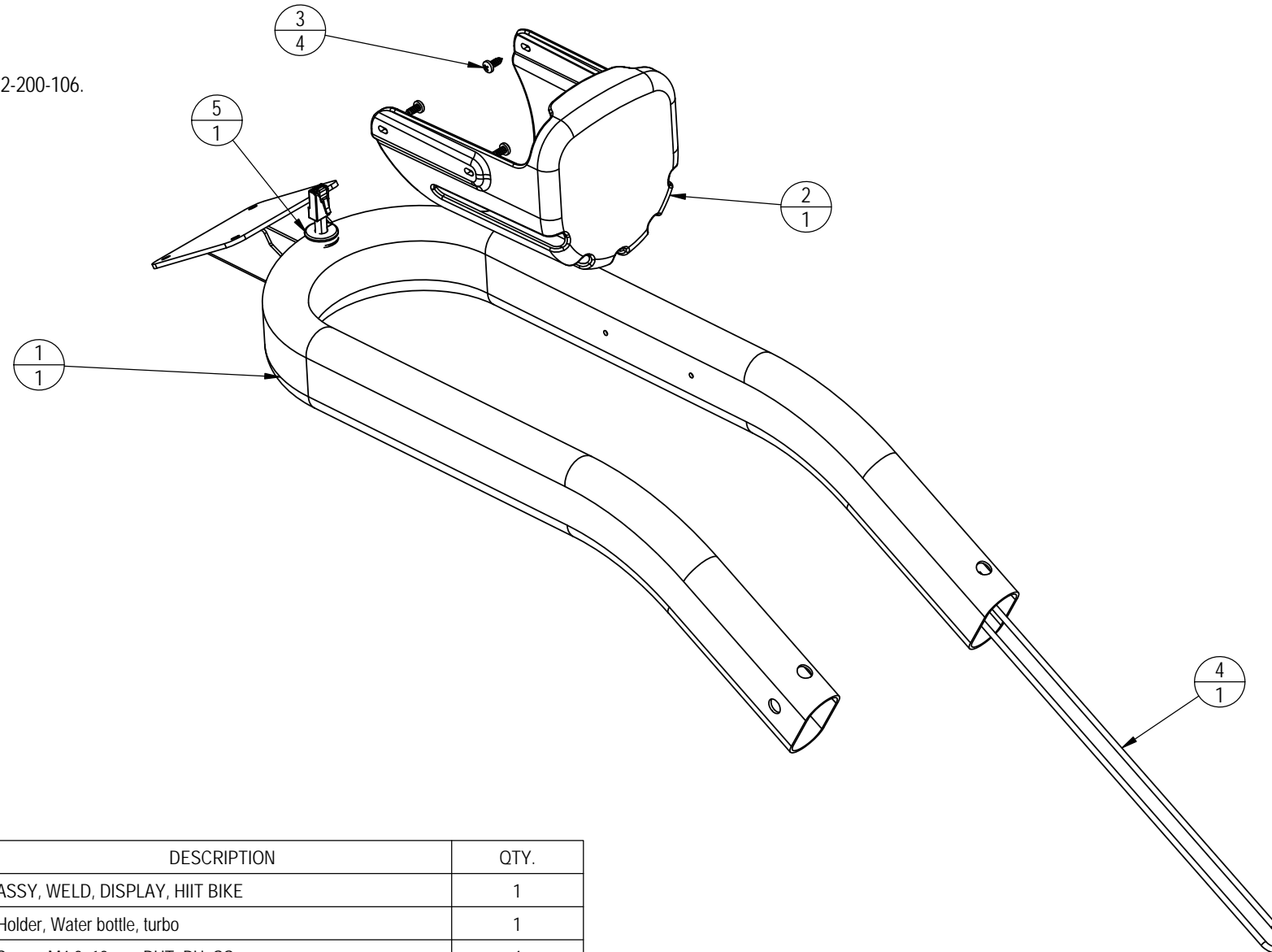


<b>CORE HEALTH &amp; FITNESS, LLC</b>		
4400 NE 77th Ave., Suite 300 Vancouver, WA 98662		
CORE PART NO	REV	
<b>9-4650-XXXXXPO</b>	<b>B</b>	
TITLE		
<b>HIIT BIKE, STAIRMASTER</b>		
SCALE: 1:8	SHEET 2 OF 2	SHEET SIZE: B

NOTES:

1. REMOVE ALL BURR'S AND REMOVE ALL SHARP EDGES 0.6mm±0.2mm MAX RADIUS AND CHAMFER, PRIOR TO WELD.
2. ALL WELDS ARE TO BE GAS METAL ARC WELDS (MIG) UNLESS OTHERWISE SPECIFIED.
3. ALL FILLET WELDS TO BE MAX 5MM UNLESS OTHERWISE SPECIFIED.
4. REMOVE ALL WELD SPLATTER
5. WELD BEAD MUST BE SMOOTH, PIN HOLES AND POROSITY NOT ALLOWED.
6. WELD QUALITY/PROCEDURE PER SOP. 620-7909 OR QUALITY/ENGINEERING APPROVED EQUIVALENT.
7. FINISH:
  - a. ALL THREADS MUST BE PLUGGED OR MASKED PRIOR TO PRETREATMENT AND POWDER COATING.
  - b. MASK ALL MARKED AREAS.
  - c. PRETREATMENT AND POWDER COAT PER SOP 620-1144 OR QUALITY/ENGINEERING APPROVED EQUIVALENT.
  - d. COLOR DICTATED BY SALES ORDER.
  - e. SEE SOP 622-200-103 FOR PART COLOR DESIGNATOR AND STRENGTH FG TABLE: 622-200-106.

REVISION HISTORY				
REV	DATE	DESCRIPTION	ECO	BY
A	8/31/2017	PRODUCTION RELEASE	15771	AW



ITEM NO.	PART NUMBER	DESCRIPTION	QTY.
1	718-5775-XX	ASSY, WELD, DISPLAY, HIIT BIKE	1
2	718-5495	Holder, Water bottle, turbo	1
3	740-7896	Screw, M4.2, 12mm, PHT, PH, SS	4
4	718-5731	CABLE, CONSOLE TO RPM/POWER, HIIT BIKE/UBE	1
5	718-5788	GROMMET, 14MM, 2 CABLE, HIIT BIKE	1

**DOCUMENT STATUS:**

NOTICE OF PROPRIETARY INFORMATION  
THIS DOCUMENT SHALL NOT BE REPRODUCED NOR SHALL THE INFORMATION CONTAINED HEREIN BE USED BY OR DISCLOSED TO OTHER EXCEPT AS EXPRESSLY AUTHORIZED BY CORE HEALTH & FITNESS, LLC.

CLASS OF WORK	UNLESS OTHERWISE SPECIFIED DIMS ARE IN mm. TOLERANCES FOR MEASURE OF LENGTH ARE:								MATERIAL SEE BOM
	0.5 to 3	> 3 to 6	> 6 to 30	> 30 to 120	> 120 to 400	> 400 to 1000	> 1000 to 2000	> 2000	
FINE	±0.05	±0.05	±0.1	±0.15	±0.2	±0.3	±0.5	----	FINISH SEE PO
MEDIUM	±0.1	±0.1	±0.2	±0.3	±0.5	±0.8	±1.2	±2	
COARSE	±0.2	±0.3	±0.5	±0.8	±1.2	±2	±3	±4	
VERY COARSE	----	±0.5	±1	±1.5	±2.5	±4	±6	±8	

THIRD ANGLE PROJECTION		
DRAWN	INITIAL AW	DATE 8/31/2017
CHECKED		
APPROVED		
VENDOR:		P/N:

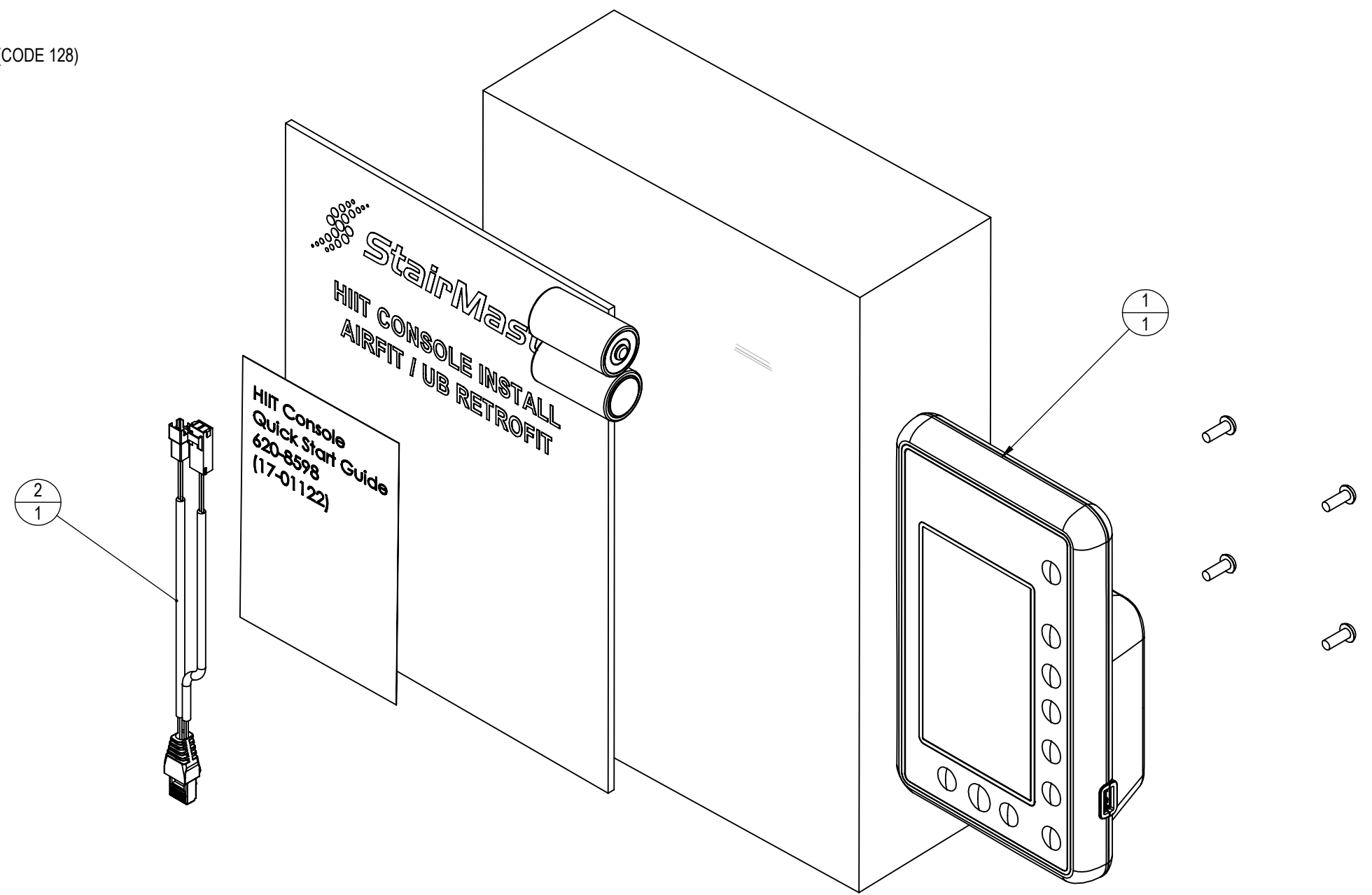
CORE HEALTH & FITNESS, LLC	
4400 NE 77th Ave., Suite 300 Vancouver, WA 98662	
CORE PART NO	REV
718-5774-XX	A
TITLE	
ASSY, DISPLAY BASE, HIIT BIKE	
SCALE: 1:20	SHEET 1 OF 1
SHEET SIZE: B	

U.O.M.			MM		
--------	--	--	----	--	--

NOTES: (UNLESS OTHERWISE SPECIFIED)

1. ASSEMBLE ITEMS BEFORE PACKAGING.
2. PACKAGE ITEMS IN A MANNER THAT THEY WILL NOT BE DAMAGED DURING SHIPPING/STORAGE.
3. PACKAGE KIT IN A PLASTIC BAG WITH P/N, DESCRIPTION, REVISION, PO#. ONE KIT PER BAG.
4. LABEL PACKAGE TO INCLUDE
  - a. PO NUMBER AND DATE
  - b. ASSEMBLY NUMBER
  - c. BAR CODE OF ASSEMBLY NUMBER (CODE 128)
  - d. ASSEMBLY DESCRIPTION
  - e. ASSEMBLY REVISION
  - f. WEIGHT (LBS / KGs)

REVISION HISTORY				
REV	DATE	DESCRIPTION	ECO	BY
A	12/21/2017	INITIAL RELEASE	15880	KA
B	3/28/2018	UPDATE TITLE	15923	KA



ITEM NO.	PART NUMBER	DESCRIPTION	QTY.
1	718-5722	HIIT CONSOLE	1
2	718-5730-KT	CABLE RETROFIT KIT, AIRFIT BIKE/UB	1

**DOCUMENT STATUS:**

NOTICE OF PROPRIETARY INFORMATION  
THIS DOCUMENT SHALL NOT BE REPRODUCED NOR SHALL THE INFORMATION CONTAINED HEREIN BE USED BY OR DISCLOSED TO OTHER EXCEPT AS EXPRESSLY AUTHORIZED BY CORE HEALTH & FITNESS, LLC.

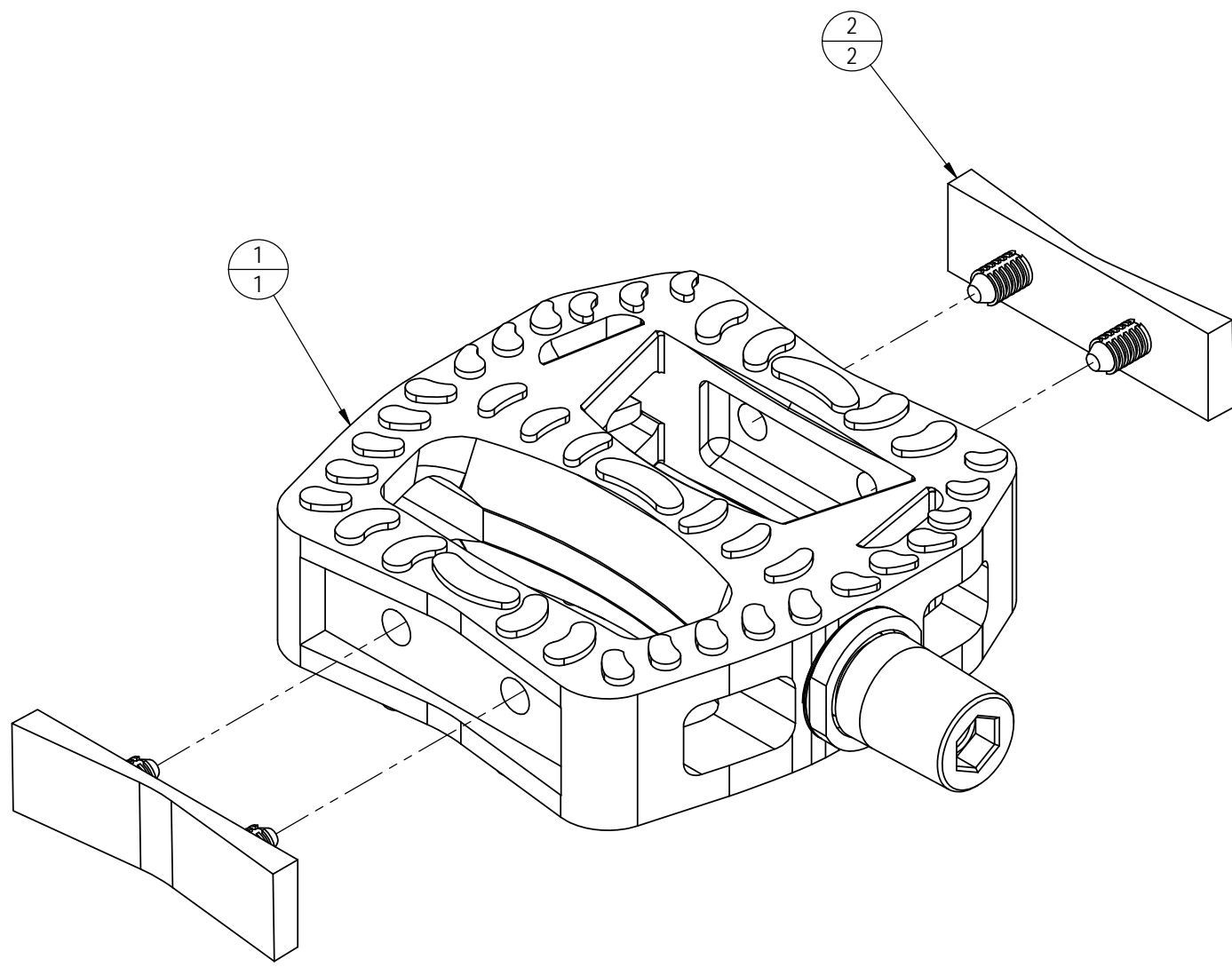
CLASS OF WORK	UNLESS OTHERWISE SPECIFIED DIMS ARE IN mm. TOLERANCES FOR MEASURE OF LENGTH ARE:								MATERIAL N/A
	0.5 to 3	> 3 to 6	> 6 to 30	> 30 to 120	> 120 to 400	> 400 to 1000	> 1000 to 2000	> 2000	
FINE	±0.05	±0.05	±0.1	±0.15	±0.2	±0.3	±0.5	----	
MEDIUM X	±0.1	±0.1	±0.2	±0.3	±0.5	±0.8	±1.2	±2	
COARSE	±0.2	±0.3	±0.5	±0.8	±1.2	±2	±3	±4	
VERY COARSE	----	±0.5	±1	±1.5	±2.5	±4	±6	±8	

THIRD ANGLE PROJECTION		DRAWN		INITIAL	DATE
				KA	12/21/2017
CHECKED		APPROVED			
VENDOR:		P/N:		U.O.M.	MM

CORE HEALTH & FITNESS, LLC 4400 NE 77th Ave., Suite 300 Vancouver, WA 98662			
CORE PART NO	<b>718-5887</b>		REV
TITLE			<b>B</b>
KIT, UPGRADE, HIIT CONSOLE, AIRFIT <sup>(B)</sup>			
SCALE: 2:5	SHEET 1 OF 1	SHEET SIZE: B	

NOTES:

REVISION HISTORY				
REV	DATE	DESCRIPTION	ECO	BY
A	9/1/2017	INITIAL RELEASE	15771	AW



ITEM NO.	PART NUMBER	DESCRIPTION	QTY.
1	718-5801	PEDAL, HIIT BIKE, L	1
2	718-5822	PEDAL RECESS FILL, HIIT BIKE	2

**DOCUMENT STATUS:**

NOTICE OF PROPRIETARY INFORMATION  
THIS DOCUMENT SHALL NOT BE REPRODUCED NOR SHALL THE INFORMATION CONTAINED HEREIN BE USED BY OR DISCLOSED TO OTHER EXCEPT AS EXPRESSLY AUTHORIZED BY CORE HEALTH & FITNESS, LLC.

CLASS OF WORK	UNLESS OTHERWISE SPECIFIED DIMS ARE IN mm. TOLERANCES FOR MEASURE OF LENGTH ARE:								ANGLES = ±2°
	0.5 to 3	> 3 to 6	> 6 to 30	> 30 to 120	> 120 to 400	> 400 to 1000	> 1000 to 2000	> 2000	
FINE	±0.05	±0.05	±0.1	±0.15	±0.2	±0.3	±0.5	----	
MEDIUM	±0.1	±0.1	±0.2	±0.3	±0.5	±0.8	±1.2	±2	
COARSE	±0.2	±0.3	±0.5	±0.8	±1.2	±2	±3	±4	
VERY COARSE	----	±0.5	±1	±1.5	±2.5	±4	±6	±8	

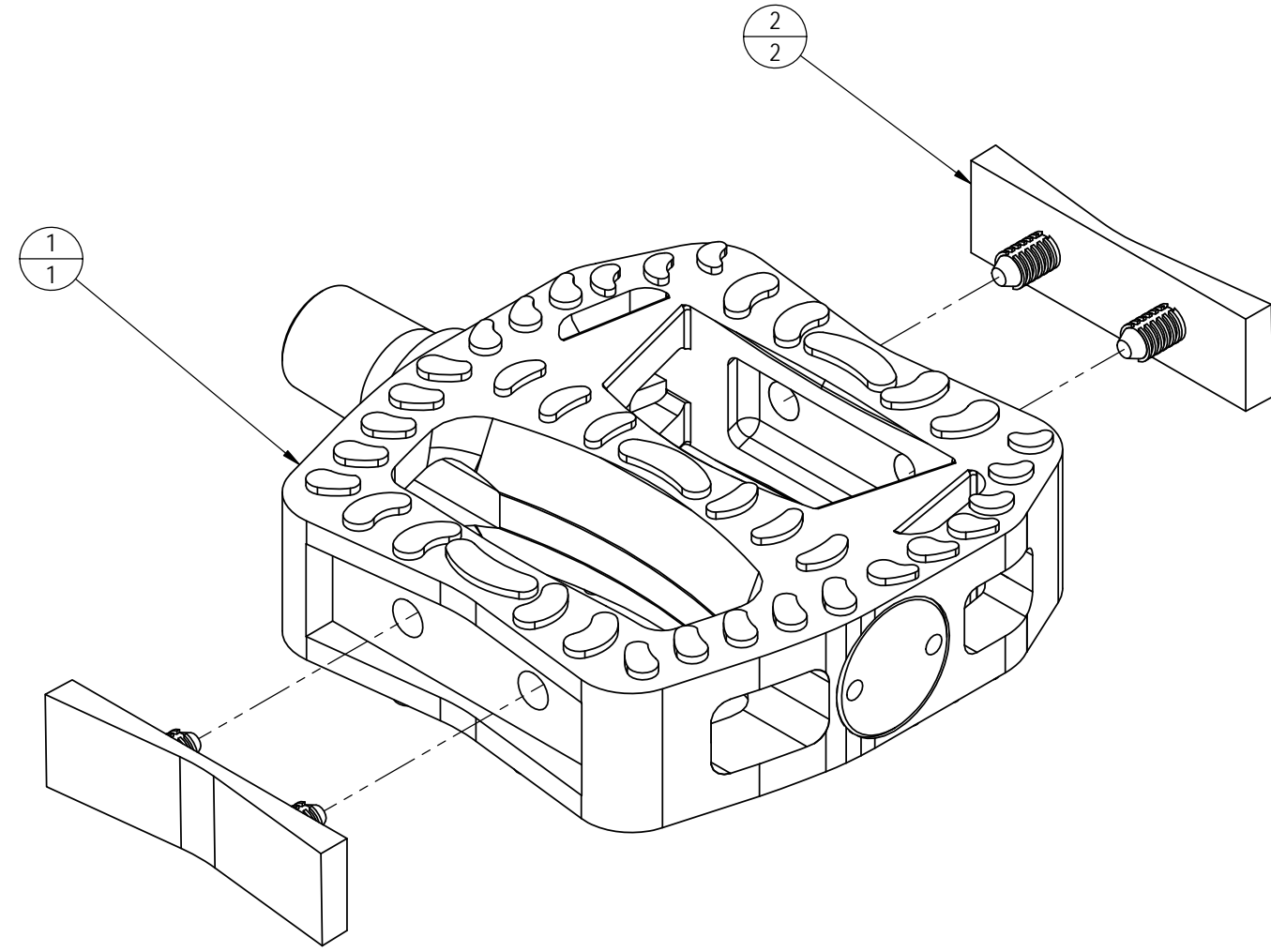
<b>MATERIAL</b> SEE BOM	<b>THIRD ANGLE PROJECTION</b> 	
<b>FINISH</b> N/A	<b>DRAWN</b> AW	<b>DATE</b> 9/1/2017
<b>VENDOR: N/A</b>	<b>P/N: N/A</b>	<b>U.O.M.</b> MM

<b>CORE HEALTH &amp; FITNESS, LLC</b> 4400 NE 77th Ave., Suite 300 Vancouver, WA 98662		
<b>CORE PART NO.</b> 718-5820	<b>REV</b> A	<b>TITLE</b> ASSY, PEDAL, HIIT BIKE, L
<b>SCALE:</b> 1:1	<b>SHEET</b> 1 OF 1	<b>SHEET SIZE:</b> B

9 8 7 6 5 4 3 2 1

NOTES:

REVISION HISTORY				
REV	DATE	DESCRIPTION	ECO	BY
A	9/1/2017	INITIAL RELEASE	15771	AW



ITEM NO.	PART NUMBER	DESCRIPTION	QTY.
1	718-5802	PEDAL, HIIT BIKE, R	1
2	718-5822	PEDAL RECESS FILL, HIIT BIKE	2

**DOCUMENT STATUS:**

NOTICE OF PROPRIETARY INFORMATION  
 THIS DOCUMENT SHALL NOT BE REPRODUCED NOR SHALL THE INFORMATION CONTAINED HEREIN BE USED BY OR DISCLOSED TO OTHER EXCEPT AS EXPRESSLY AUTHORIZED BY CORE HEALTH & FITNESS, LLC.

CLASS OF WORK	UNLESS OTHERWISE SPECIFIED DIMS ARE IN mm. TOLERANCES FOR MEASURE OF LENGTH ARE:							ANGLES = ±2°		
	0.5 to 3	> 3 to 6	> 6 to 30	> 30 to 120	> 120 to 400	> 400 to 1000	> 1000 to 2000	> 2000		
FINE	±0.05	±0.05	±0.1	±0.15	±0.2	±0.3	±0.5	----		
MEDIUM	±0.1	±0.1	±0.2	±0.3	±0.5	±0.8	±1.2	±2		
COARSE	±0.2	±0.3	±0.5	±0.8	±1.2	±2	±3	±4		
VERY COARSE	----	±0.5	±1	±1.5	±2.5	±4	±6	±8		

**MATERIAL**  
SEE BOM

**FINISH**  
N/A

**VENDOR:** N/A      **P/N:** N/A

THIRD ANGLE PROJECTION		
DRAWN	INITIAL AW	DATE 9/1/2017
CHECKED		
APPROVED		
	U.O.M.	MM

**CORE HEALTH & FITNESS, LLC**  
 4400 NE 77th Ave., Suite 300  
 Vancouver, WA 98662

CORE PART NO: **718-5821**      REV: **A**

TITLE: **ASSY, PEDAL, HIIT BIKE, R**

SCALE: 1:1      SHEET 1 OF 1      SHEET SIZE: B

9 8 7 6 5 4 3 2 1